

Preliminary Structural Interpretation of a Seismic Profile across the Frontal Sector of the Eastern Achara-Trialeti Fold-and-Thrust Belt

Victor Alania^{*}, Paolo Pace^{,#}, Sveva Corrado^{##}, Thomas Gusmeo[§],
Tamar Beridze^{§§}, Nino Sadradze^{*}, Niko Tevzadze[°]**

^{*}*M. Nodia Institute of Geophysics, Ivane Javakhishvili Tbilisi State University, Tbilisi, Georgia*

^{**}*G.E. Plan Consulting, Petroleum Geosciences, Ferrara, Italy*

[#]*Department of Engineering and Geology, 'G. d'Annunzio' University of Chieti-Pescara, Chieti, Italy*

^{##}*Department of Sciences, Roma Tre University, Rome, Italy*

[§]*Department of Biological, Geological and Environmental Sciences, University of Bologna, Italy*

^{§§}*Al. Janelidze Geological Institute, Ivane Javakhishvili Tbilisi State University, Tbilisi, Georgia*

[°]*Georgia Oil and Gas Limited, Tbilisi, Georgia*

(Presented by Academy Member Tamaz Chelidze)

This paper presents a new structural model for the frontal part of the eastern Achara-Trialeti fold-and-thrust belt based on the interpretation of a seismic reflection profile across the retro-wedge of the Lesser Caucasus orogen. The structural details from the interpreted seismic reflection profile provide new data on the deep structure of the frontal part of the eastern Achara-Trialeti fold-and-thrust belt. The seismic reflection profile crosses, from south to north, the Varketili anticline, the Ormoiani syncline, and a south-directed imbricate thrust system. Seismic interpretation is constrained by surface geology, exploration wells, and application of theoretical models on fault-related folding. Seismic reflection data interpretation reveals the interaction between south- and north-vergent fold-thrust structures and north-vergent duplexes at depth. The duplexes are well imaged on the seismic profile and constituted by a lower and an upper duplex system. The lower duplex involves the Cretaceous-Middle Eocene sequence, whereas the upper duplex affects the Upper Eocene strata. © 2021 Bull. Georg. Natl. Acad. Sci.

Achara-Trialeti fold-and-thrust belt, seismic reflection profile, duplex

The structural interpretation of the deep architecture of the frontal sector of the eastern Achara-Trialeti fold-and-thrust belt (ATFTB) has significantly changed following the interpretation of progressively new seismic data [1-3]. A robust

reconstruction of the subsurface derived only from surface geology and borehole data is fairly hard to obtain [4, 5], consequently the reliability of such models is doubtful. It should be mentioned that previous studies for particular sectors of the eastern

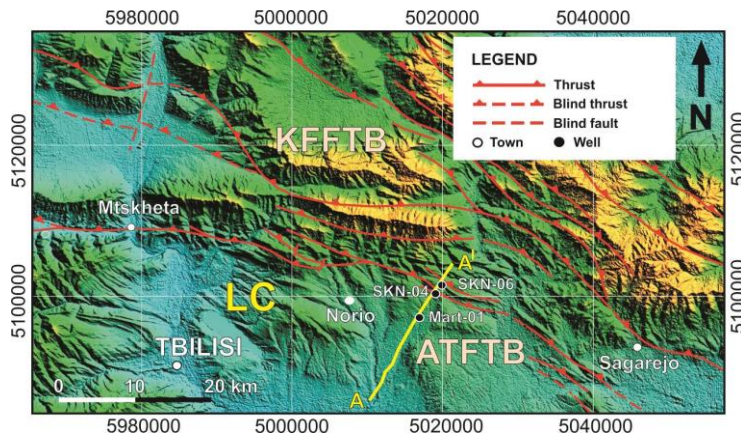


Fig. 1. Study area and simplified structural map of frontal part of the eastern ATFTB and KFB. The red color indicates the main thrusts, mapped based on our interpretation and on already published maps and cross sections [3, 6]. Yellow color line is seismic profile A-A'. Abbreviations: LC-Lesser Caucasus; KFFTB-Kura foreland fold-and-thrust belt; ATFTB-Achara-Trialeti fold-and-thrust belt.

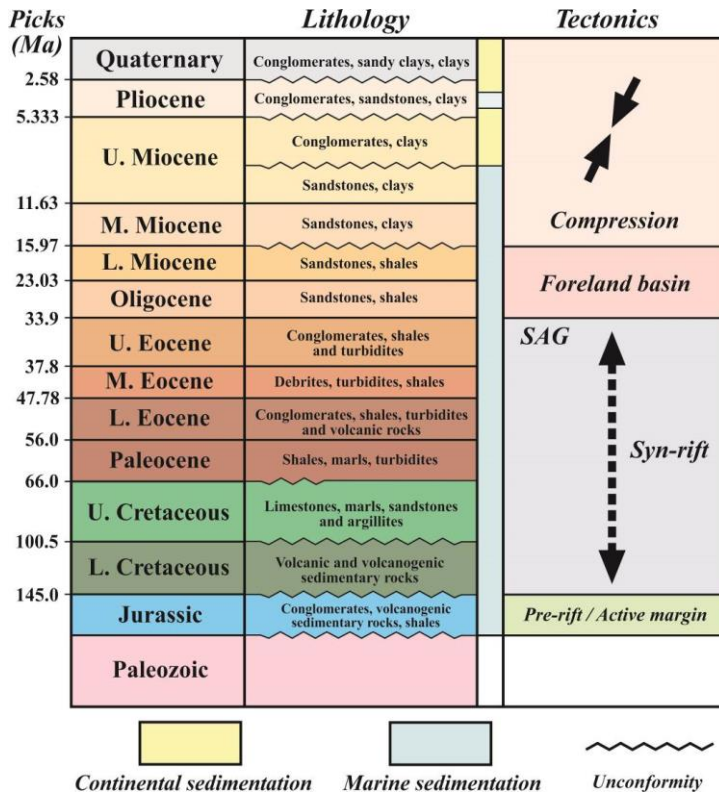


Fig. 2. Tectono-stratigraphic chart of the study area [3].

ATFTB, such as the subsidence zone, were mainly based on well data [6]. Conversely, several new seismic reflection profiles are now available for areas in the northern part of eastern ATFTB. In this particular segment, the deep structure of the Norio-

Satskhenisi oil field is the target object of our investigation (Fig. 1). The main aim of our research was to study the deep structure of the area via interpretation of a seismic profile by applying

conceptual models related to the theory of fault-related folding [4, 5].

of the ATFTB is affected by northward thrusting of the Lesser Caucasus basement wedge(s) [1, 3, 7].

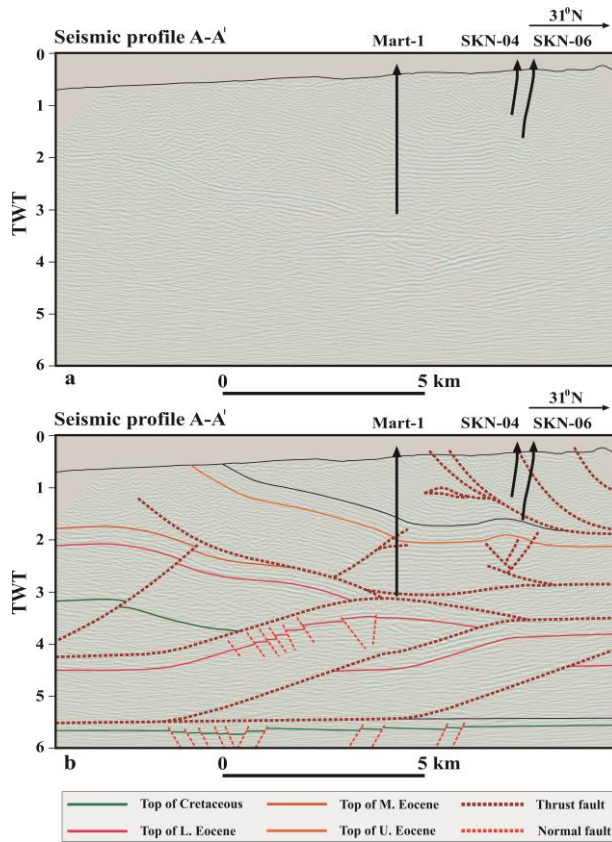


Fig. 3. (a) Uninterpreted and (b) interpreted seismic reflection profile A-A¹. Location is shown in Figure 1.

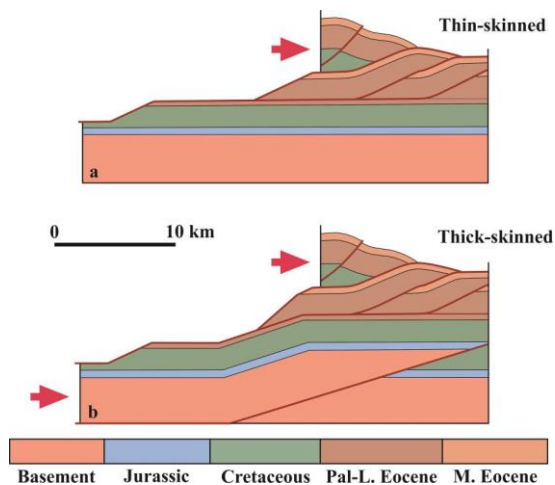


Fig. 4. Structural model for the frontal part of the eastern ATFTB. (a) Thin-skinned model. (b) Thick-skinned model.

The ATFTB is located in the retro-wedge of the Lesser Caucasus orogen. The present-day geometry

The collision between the Arabian and Eurasian plates caused inversion of sub-parallel extensional

basins and intensive deformation within the Lesser Caucasus during late Alpine times [1, 3]. The ATFTB lies to the south of the Kura foreland basin (KFB) and extends in the west-east direction. Our study, which has been carried out integrating seismic reflection profile interpretation with published data, is located in central Georgia along the frontal part of the eastern ATFTB. The location of the 2D seismic reflection profile (A-A¹) is shown in Figure 1.

The structural trend in the eastern ATFTB consists of north and south-vergent folds, reverse faults, and thrusts [1, 6-12]. The stratigraphy of the study area records the evolution from the extensional Achara-Trialeti rift basin to its closure and inversion in the compressional context of the Arabia-Eurasia collision zone (Fig. 2). The sedimentary succession of the frontal part of the eastern ATFTB is commonly represented by more than 7 km thick pre-rift (Jurassic), syn-rift (Cretaceous-Upper Eocene), post-rift/foreland (Oligocene-Lower Miocene) and syn-orogenic (Middle Miocene-Pliocene) strata [3]. The contractional deformation in the eastern ATFTB, which was mostly concentrated in the frontal part of the eastern ATFTB at the border with the KFB, has commonly been attributed to the Upper Miocene-Pleistocene [1, 7]. Recent apatite fission-track and (U-Th)/He data have refined its age of inception, which occurred in the Middle Miocene [10, 11]. Recent GPS and earthquakes data indicate that the ATFTB is tectonically active [13-15].

The 2D seismic reflection profile A-A¹ crosses from south to north the Varketili anticline, the Ormoiani syncline, and the south-directed imbricate thrust system (Fig. 1). Seismic interpretation is constrained by surface geology, exploration wells, and application of fault-related folding models [4]. The 2D time migrated seismic profile A-A¹ indicates that the fold-and-thrust belt front is characterized by the interaction between the shallow south-directed thrust system and deeper south- and north-directed duplexes (Fig. 3). The

duplexes are well imaged on the seismic profile and are constituted by two vertically stacked lower and upper duplex systems (Fig. 3). The lower duplex system affects the Cretaceous-Middle Eocene strata whilst the upper duplex system involves the Upper Eocene strata. Our interpretation suggests that several detachment faults controlled the deformation of the frontal part of the eastern ATFTB. A basal detachment fault is localized within the Lower Eocene shales, and a shallow detachment fault lies within the Upper Miocene strata (Fig. 3). At surface, the collision zone (or initial collision zone) between the Lesser and Greater Caucasus orogens shows south-vergent imbricated thrust-fold structures. The south-directed imbricate thrusts involve Maikopian and Upper Miocene deposits. The seismic profile (A-A¹) interpretation also reveals the occurrence of inherited normal faults, which have not been reactivated, within the contractional structures [16] and below the detachment. Reactivation of other normal faults through positive inversion [17] occurred during compression (Fig. 3). The structural details from the interpreted seismic reflection profile A-A¹ provide a new perspective on the deep structure of the frontal part of the eastern ATFTB. In this work, based on the integration of field and 2D seismic data, we suggest that the deep structure of the frontal eastern Achara-Trialeti fold-and-thrust belt is characterized by north and south-vergent thrusts and north-vergent duplex systems. In Figure 4 we introduce two possible models for the deep structure of our study area: (1) in the first model the structure of the thrust front of the eastern ATFTB is thin-skinned, with structures developed over a mostly undeformed basement; (2) in the second model it is thick-skinned, with the basement involved in the deformation [18]. Moreover, the possibility that precursor deep-rooted faults may be involved in and control the structural evolution [17, 19] cannot be excluded.

Duplexes and thrust-related folds in fold-and-thrust belts commonly form important structural hydrocarbon traps [4]. The definition of plausible structural models and the thorough comprehension of the structural architecture and kinematic development are essential for successful exploration of oil and gas resources. The main reservoir rocks in eastern Georgia are represented by Middle Eocene volcanoclastic turbidite sandstones [12, 20]. In this regard, the study area, and especially the sectors where lower duplexes and thrust-related folds are developed, are extremely important for subsurface exploration.

The new results presented in this study on the structural architecture of the frontal part of the eastern ATFTB certainly need to be integrated with further structural studies, balanced and reconstructed cross-sections and forward kinematic modelling.

The work was supported by Shota Rustaveli National Science Foundation of Georgia (SRNSF #YS-19-1104). We acknowledge the useful review and suggestions of Alexander Chabukiani and Onise Enukidze on a previous version of the manuscript.

გეოფიზიკა

აღმოსავლეთ აჭარა-თრიალეთის ნაოჭა-შეცოცებითი სარტყლის ფრონტულ სექტორზე გამავალი სეისმური პროფილის წინასწარი სტრუქტურული ინტერპრეტაცია

ვ. ალანია*, კ. პაჩე**, #, ს. კორადო###, თ. გუსმეო§, თ. ბერიძე§§, ნ. სადრაძე*, ნ. თევზაძე°

* ივანე ჯავახიშვილის სახ. თბილისის სახელმწიფო უნივერსიტეტი, მ. ნოდის გეოფიზიკის ინსტიტუტი, თბილისი, საქართველო

** გ.ე. ფლენ კონსალტინგი, ნავთობის გეომეცნიერება, ფერარა, იტალია

ჩიეტი-პესკარას უნივერსიტეტი, საინჟინრო და გეოლოგიის დეპარტამენტი, ჩიეტი, იტალია

რომა ტრე უნივერსიტეტი, მეცნიერების დეპარტამენტი, რომი, იტალია

§ ბოლონიის უნივერსიტეტი, ბიოლოგიის, გეოლოგიის და გარემოსდაცვითი მეცნიერების დეპარტამენტი, ბოლონია, იტალია

§§ ივანე ჯავახიშვილის სახ. თბილისის სახელმწიფო უნივერსიტეტი, აღ. ჯანელიძის გეოლოგიური ინსტიტუტი, თბილისი, საქართველო

° საქართველოს ნავთობის და გაზის კომპანია, თბილისი, საქართველო

(წარმოდგენილია აკადემიის წევრის თ. ჭელიძის მიერ)

სტატიაში წარმოდგენილია აღმოსავლეთ აჭარა-თრიალეთის ნაოჭა-შეცოცებითი სარტყლის ფრონტული ნაწილის სტრუქტურული მოდელი, რომელიც დაფუძნებულია მცირე კავკასიონის ოროგენის რეტრო-სოლის გასწვრივ მდებარე სეისმური პროფილის ინტერპრეტაციაზე. ინტერპრეტირებული სეისმური პროფილის სტრუქტურული დეტალები იძლევა ახალ მონაცემებს აღმოსავლეთ აჭარა-თრიალეთის ნაოჭა-შეცოცებითი სარტყლის ფრონტული ნაწილის სიღრმული აგებულების შესახებ. სეისმური პროფილი სამხრეთიდან ჩრდილოეთის მიმართულებით კვეთს ვარკეთილის ანტიკლინს, ორმოიანის სინკლინს და სამხრეთ-ვერგენტულ ქერცლოვან შეცოცებებს. სეისმური ინტერპრეტაცია შესრულებულია ზედაპირული გეოლოგიის, ბურღილების მონაცემების და რღვევებთან დაკავშირებული ნაოჭების თეორიული მოდელების გამოყენებით. არეკვლილი სეისმური მონაცემები გვიჩვენებს სამხრეთ და ჩრდილოეთ-ვერგენტული ნაოჭა-შეცოცებითი სტრუქტურების და სიღრმეში ჩრდილოეთ-ვერგენტული დუპლექსების ურთიერთდამოკიდებულებას. დუპლექსები კარგად არის გამოსახული სეისმურ პროფილზე და წარმოდგენილია ქვედა და ზედა დუპლექსების სისტემით. ქვედა დუპლექსები მოიცავს ცარცი-შუა ეოცენის, ხოლო ზედა დუპლექსები - ზედა ეოცენის ქანებს.

REFERENCES

1. Alania V., Chabukiani A., Chagelishvili R., Enukidze O., Gogrichiani K., Razmadze A., Tsereteli N. (2017) Growth structures, piggyback basins and growth strata of Georgian part of Kura foreland fold and thrust belt: implication for Late Alpine kinematic evolution. *Geological Society, London, Special Publications*, **428**: 171-185.
2. Alania V., Beridze T., Enukidze O., Lebanidze Z., Razmadze A., Sadradze N., Tevzadze N. (2020) Structural Model of the Frontal Part of the Eastern Achara-Trialeti Fold-and-Thrust Belt: the Results of Seismic Profile Interpretation, Georgia. *Bull. Georg. Natl. Acad. Sci.*, **14**, 2: 62-67.
3. Alania V., Beridze M., Enukidze O., Chagelishvili R., Lebanidze Z., Maqadze D., Razmadze A., Sadradze N., Tevzadze N. (2021) The geometry of the two orogens convergence and collision zones in Central Georgia: new data from seismic reflection profiles. *Building Knowledge for Geohazard Assessment and Management in the Caucasus and other Orogenic Regions*, 73-88.
4. Shaw J. H., Connors C. D., Suppe J. (2006) Seismic interpretation of contractional fault-related folds. *AAPG Studies in Geology*, 156 p.
5. Butler R. W. H., Bond C. E., Cooper M. A., Watkins H.M. (2018) Interpreting structural geometry in fold-thrust belts: why style matters. *Journal of Structural Geology*, **114**: 251-273.
6. Papava D. (1967) Voprosy geologii vostochnoi chasti Trialetskogo khrebtia i perspektivy neftegazonosnosti melovykh i paleogenovykh otlozhenii, 188-204 (in Russian).
7. Banks C. J., Robinson A. G., Williams M. P. (1997) Structure and regional tectonics of the Achara-Trialeti fold-belt and the adjacent Rioni and Kartli foreland basins, Republic of Georgia. *Regional and Petroleum Geology of the Black Sea and Surrounding Region*, 331-346.
8. Gamkrelidze I. (1976) Mekhanizm formirovaniia tektonicheskikh struktur i nekotorye voprosi tektonogeneza. Tbilisi, 226 p. (in Russian).
9. Adamia Sh., Alania V., Ananiashvili G., Bombolakis E., Chichua G., Girshiashvili D., Martin R., Tatarashvili L. (2002) Late Mesozoic-Cenozoic geodynamic evolution of the eastern Georgian oil-gas bearing basins. *Geologica Carpathica*, **53**: 155-159.
10. Corrado S., Gusmeo T., Schito A., Alania V., Enukidze O., Conventi E., Cavazza W. (2021) Validating far-field deformation styles from the Adjara-Trialeti fold-and-thrust belt to the Greater Caucasus (Georgia) through multi-proxy thermal maturity datasets. *Marine and Petroleum Geology*, **130**: 105-141.
11. Gusmeo T., Cavazza C., Alania V., Enukidze O., Zattin M., Corrado S. (2021) Structural inversion of back-arc basins - The Neogene Adjara-Trialeti fold-and-thrust belt (SW Georgia) as a far-field effect of the Arabia-Eurasia collision. *Tectonophysics*, **803**: 228702.
12. Tari G., Vrsic A., Gumpenberger T., Mekonnen E., Hujer W., Fallah M., Tevzadze N., Janiashvili A., Pace P., Ricciato A., Alania V., Enukidze O. (2021) Eocene volcanoclastic reservoir rocks in the Kartli Basin, Georgia: a fractured reservoir sequence. *Journal of Petroleum Geology*, **44**: 413-434.
13. Adamia Sh., Alania V., Chabukiani A., Kuloshvili S., Maisuradze G., Gotsiridze G. (2004) Seismic source zone models of recent earthquakes of Georgia. *Proceedings of the 5th International Symposium on Eastern Mediterranean Geology*, 545-551.
14. Sokhadze G., Floyd M., Godoladze T., King R., Cowgill E. S., Javakhishvili Z., Hahubia G., Reilinger R. (2018) Active convergence between the Lesser and Greater Caucasus in Georgia: constraints on the tectonic evolution of the Lesser-Greater Caucasus continental collision. *Earth and Planetary Science Letters*, **481**: 154-161.
15. Tsereteli N., Tibaldi A., Alania V., Gventsadse A., Enukidze O., Varazanashvili O., Müller B. I. R. (2016) Active tectonics of central-western Caucasus, Georgia. *Tectonophysics*, **691**: 328-344.
16. Calamita F., Di Domenica A., Pace P. (2018) Macro- and meso-scale structural criteria for identifying pre-thrusting normal faults within foreland fold-and-thrust belts: Insights from the Central-Northern Apennines **30**: 50-62. Italy. Terra Nova.
17. Tavarnelli E., Scisciani V., Patruno S., Calamita F., Pace P., Iacopini D. (2019) The role of structural inheritance in the evolution of fold-and-thrust belts: Insights from the Umbria-Marche Apennines, Italy. *Special Paper of the Geological Society of America*, **542**: 191-211.
18. Pfiffner O. (2006) Thick-skinned and thin-skinned styles of continental contraction. *Geological Society of America, Special Papers*, **414**: 153-177.
19. Calamita F., Pace P., Scisciani V., Properzi F., Francioni M. (2021) Dinaric up-thrusts in the Pliocene evolution of the Central Apennines thrust belt of Italy: the Montagna dei Fiori structure. *Geological Magazine*, **158**: 1-16.
20. Patton D. K. (1993) Samgori field, republic of Georgia: critical review of island-arc oil and gas. *Journal of Petroleum Geology*, **16**: 153-168.

Received November, 2021